

	<p>HEALTH, SAFETY, ENVIRONMENT AND QUALITY MANAGEMENT SYSTEM</p> <p><b>49.0a FOR CHARTWORLD eGLOBE G2</b></p> <p>ON THE JOB TRAINING</p>	<p>OJT : 049a  Page : 1 of 4  Date : 07-Nov-25  Rev : 10.1  Appr : DPA</p>
--	--	--

VESSEL: \_\_\_\_\_

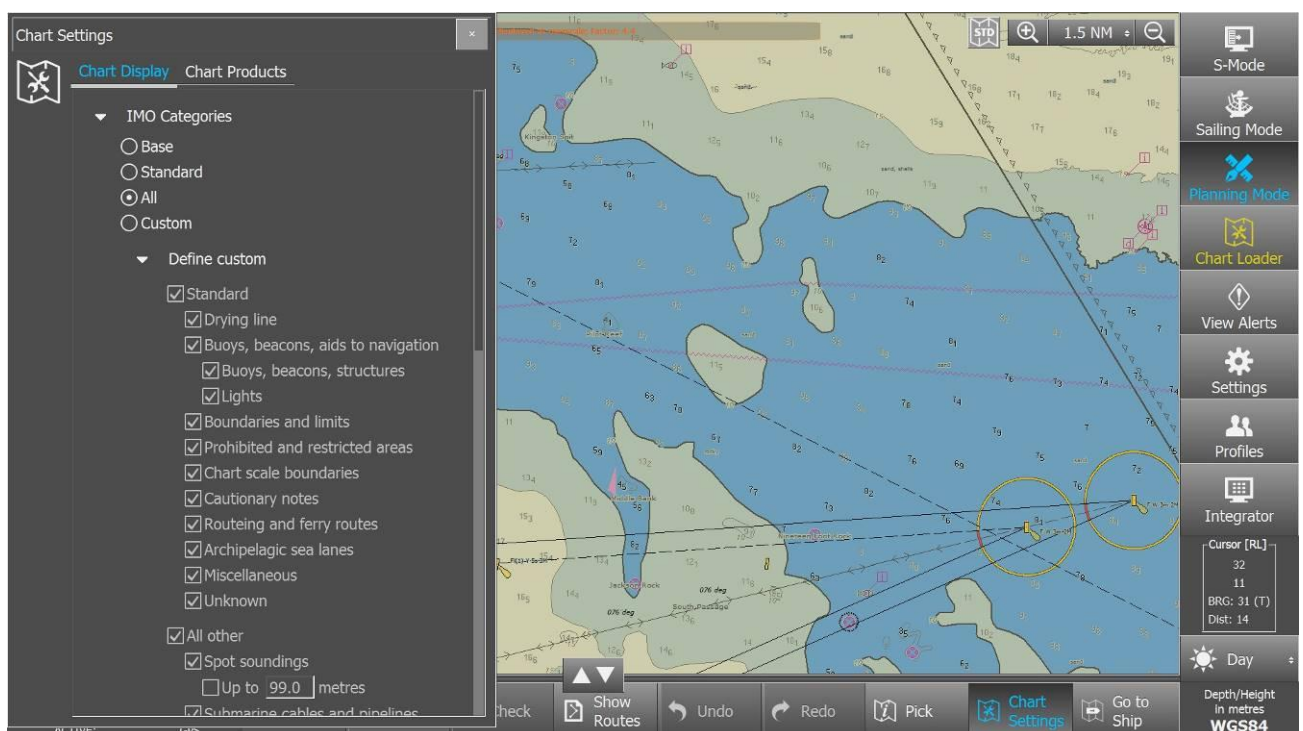
DATE: \_\_\_\_\_

### Details of Training: For Chartworld eGlobe G2

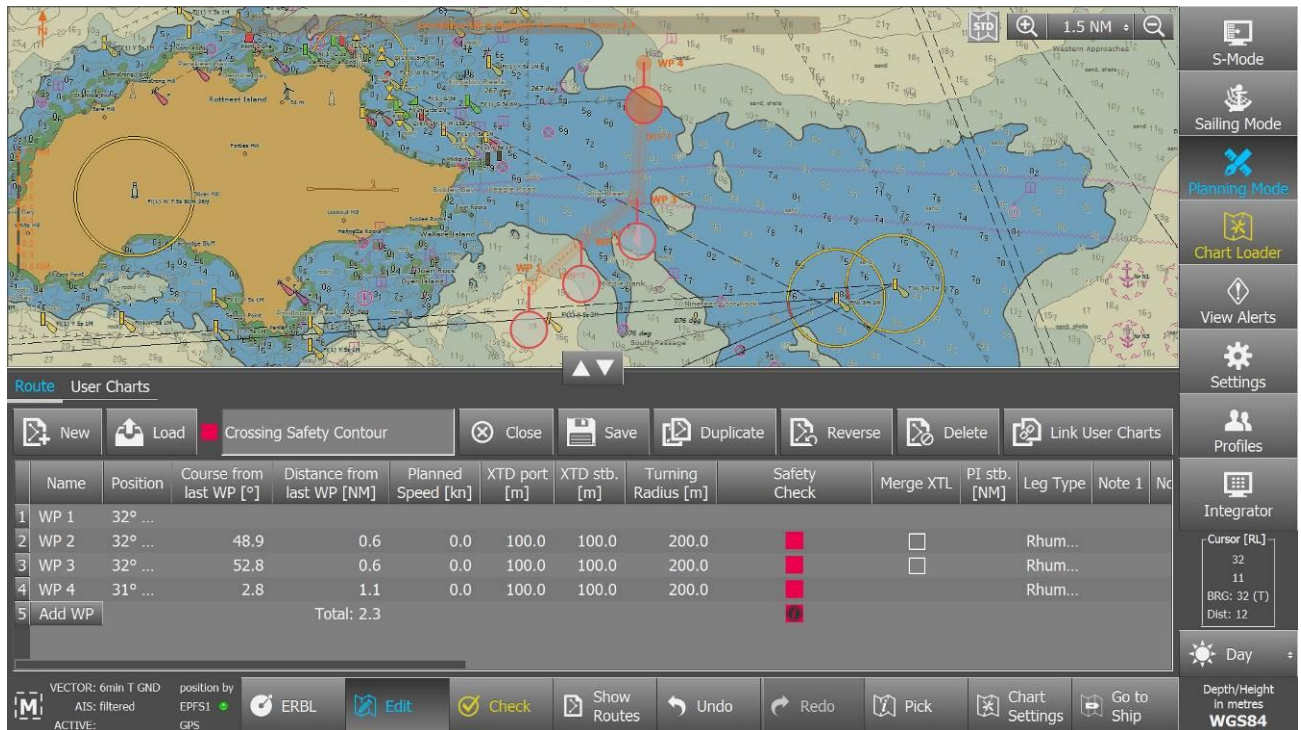
- Ensure safety depth is entered correctly into ECDIS



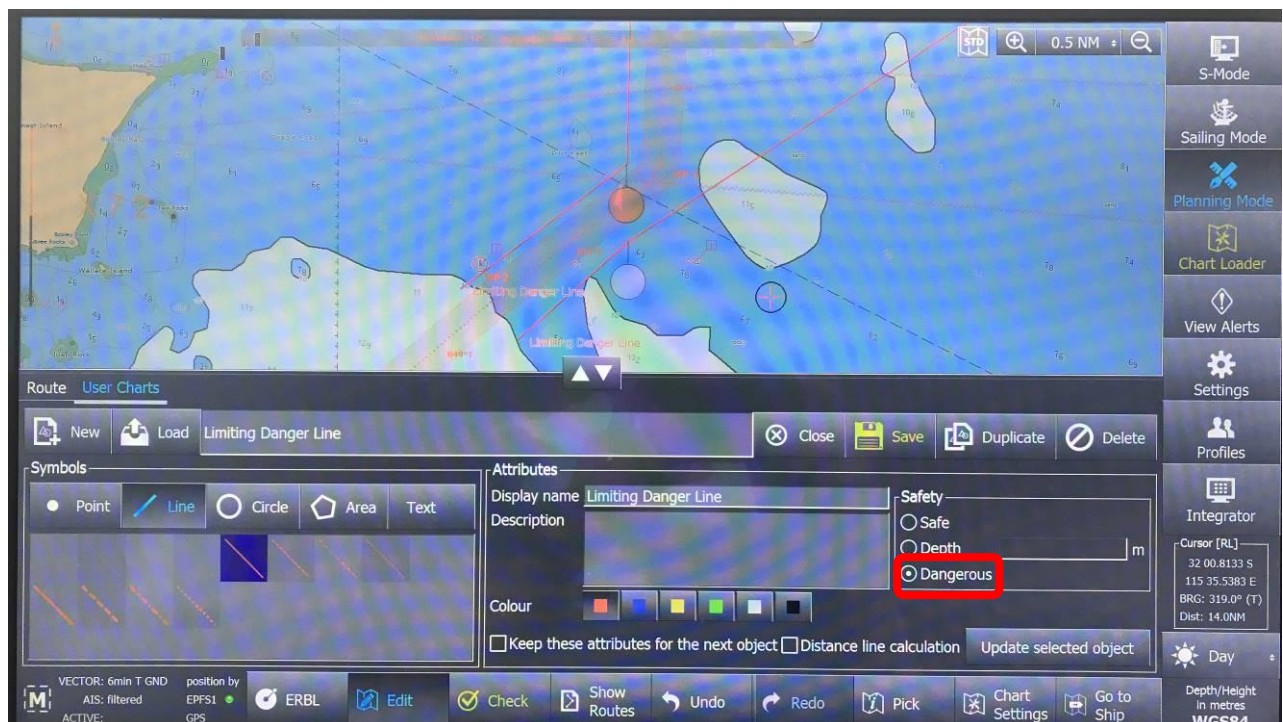
- Select Safety Contour in ECDIS and select viewing groups for soundings, seabed features and contours to be displayed. Ensure all obstructions and potential hazards are displayed (safest is to use Display = „ALL”)



- Review area within the Safety Contour to identify areas greater than safety depth to determine that planned leg remains in safe water

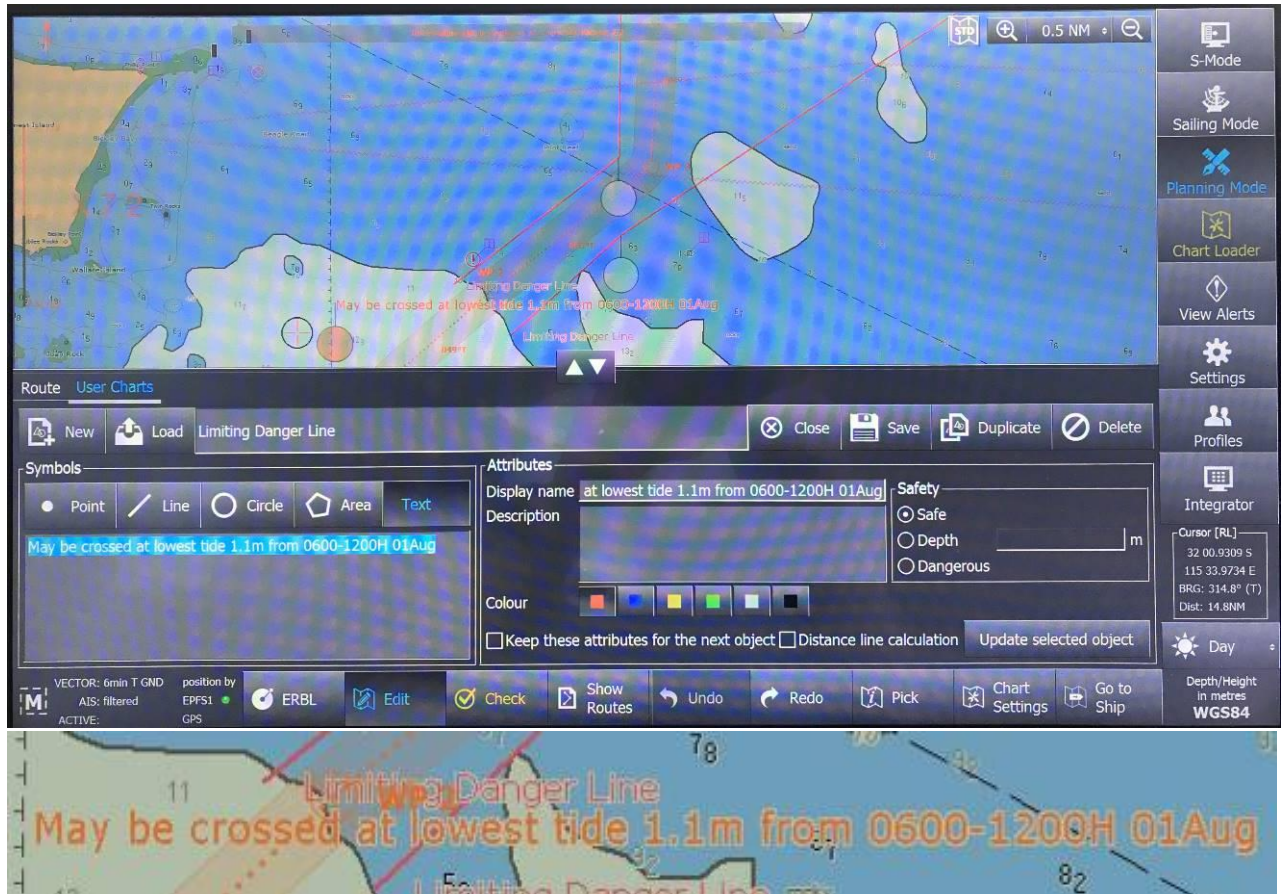


- Manually draw (mark-up) Limiting Danger Lines with the User Chart tool using a line demarcating the safe and unsafe areas and marking the latter as Dangerous. Select the User Chart danger alarm in the Chart Alert window for the manually drawn Limiting Danger Lines (and save) so that any approach to this area alarm is activated.

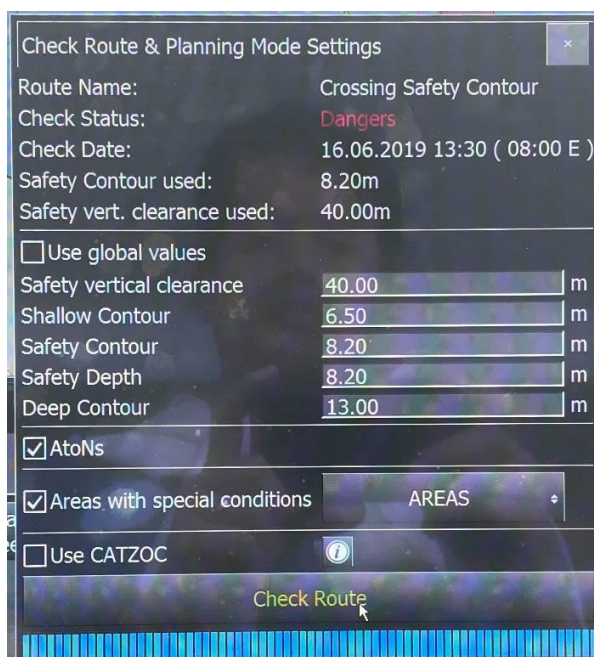


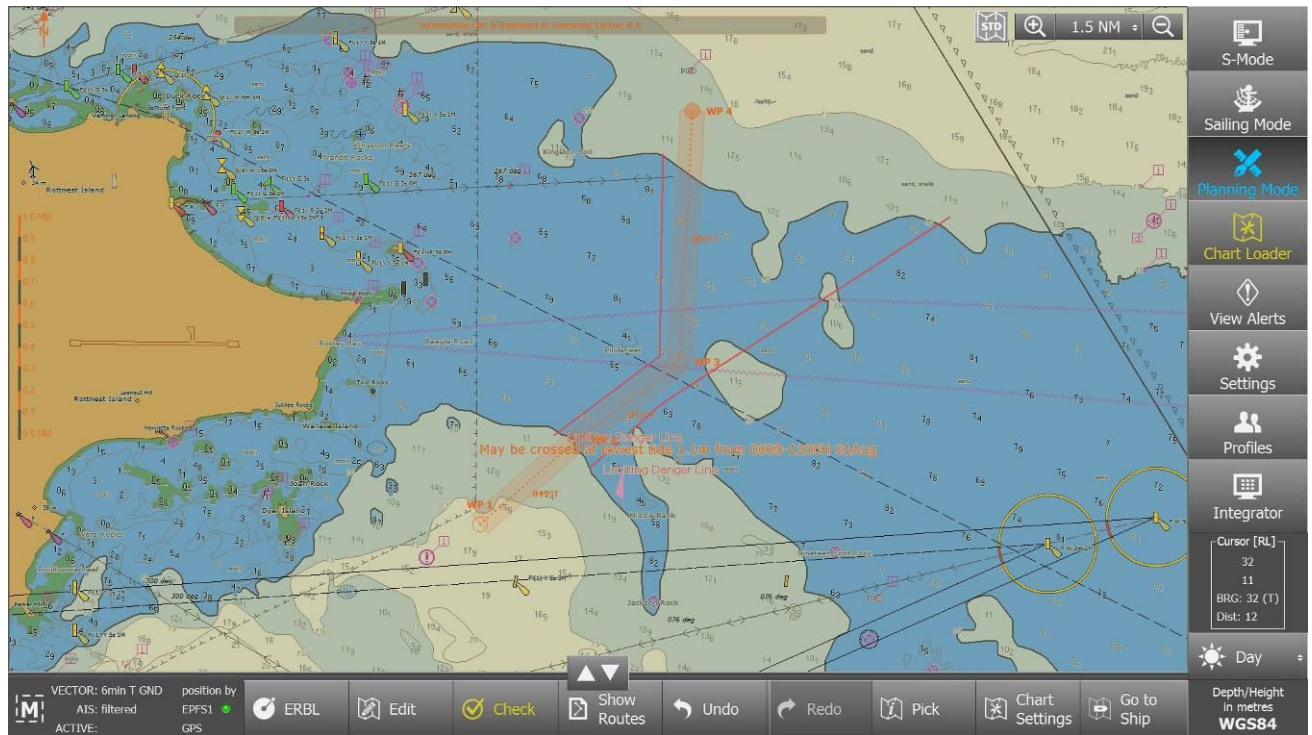


- Add Mariner's Note to show area that may be crossed at appropriate height of tide with time and date for planned crossing.



- Run route check to confirm that Safety Contour crossing is identified and note in Voyage Plan for review and approval by the Master.





The above has been read and understood:

CO: \_\_\_\_\_

2O: \_\_\_\_\_

3O: \_\_\_\_\_

Verified by: Master \_\_\_\_\_

Feedback: